

Bear Creek Watershed Plan & Environmental Assessment

Public Meeting

Tuesday – July 30, 2024 – 6:00 p.m. CST

 **USDA** Natural Resources Conservation Service
U.S. DEPARTMENT OF AGRICULTURE



Meeting Purpose

Receive public input on alternatives for flood damage reduction in the Canton area of the Bear Creek Watershed



Natural Resources Conservation Service
U.S. DEPARTMENT OF AGRICULTURE



Key Players for Bear Creek Watershed Plan Process



Natural Resources Conservation Service
U.S. DEPARTMENT OF AGRICULTURE

Kurt Readus
State Conservationist

Olguy Louis
State Conservation Engineer
and Program Manager



SPONSOR

Madison County Board of Supervisors

Nick Ivy, Executive Director
Mississippi Soil and Water Conservation Commission



Brad Shedd, Bureau Director
Mississippi Soil and Water Conservation Commission



TECHNICAL CONTRACTOR
Waggoner Engineering
AJA Management & Technical Services



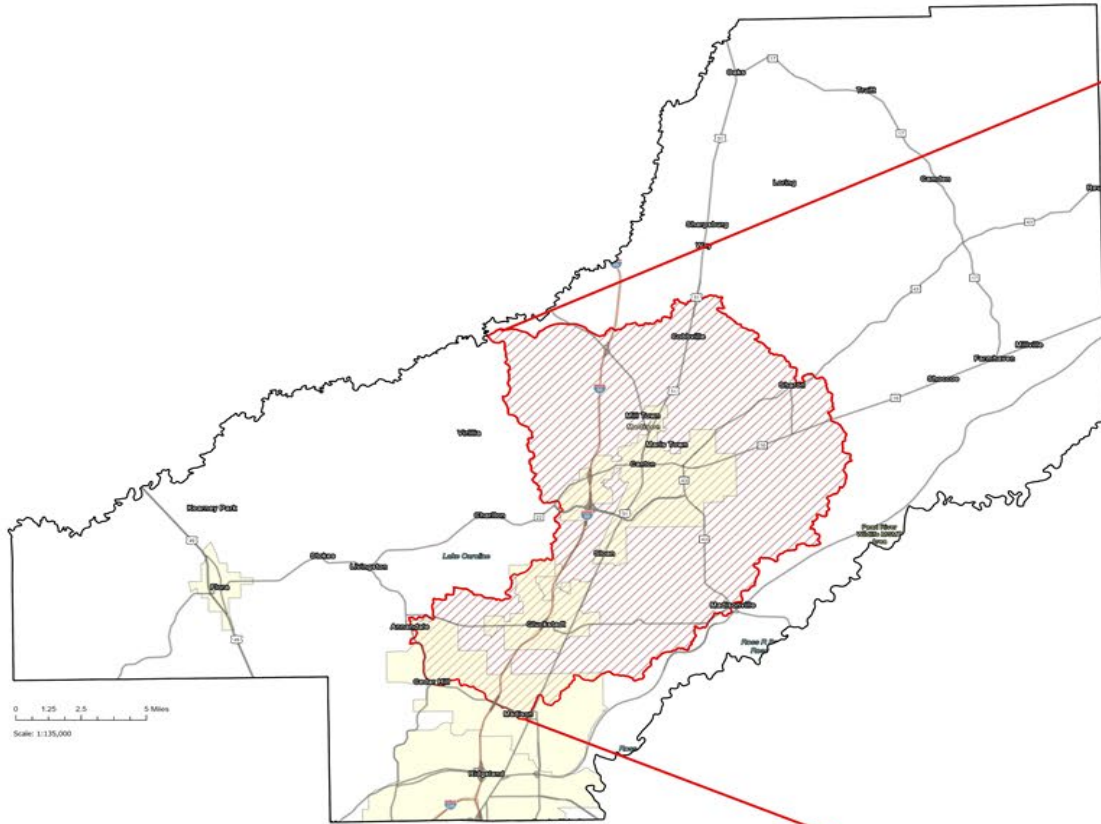
Purpose of the Watershed Plan



Reduce damages from flooding in the high-risk areas of the City of Canton

- *Reduce amount of flood water*
- *Reduce depth of flood water*

This is the Bear Creek Watershed



Natural Resources Conservation Service
U.S. DEPARTMENT OF AGRICULTURE



0 0.75 1.5 3 Miles
Scale: 1:46,000



‘No Action’ Alternative

A baseline to measure benefits and impacts of alternative solutions.



Action Alternatives

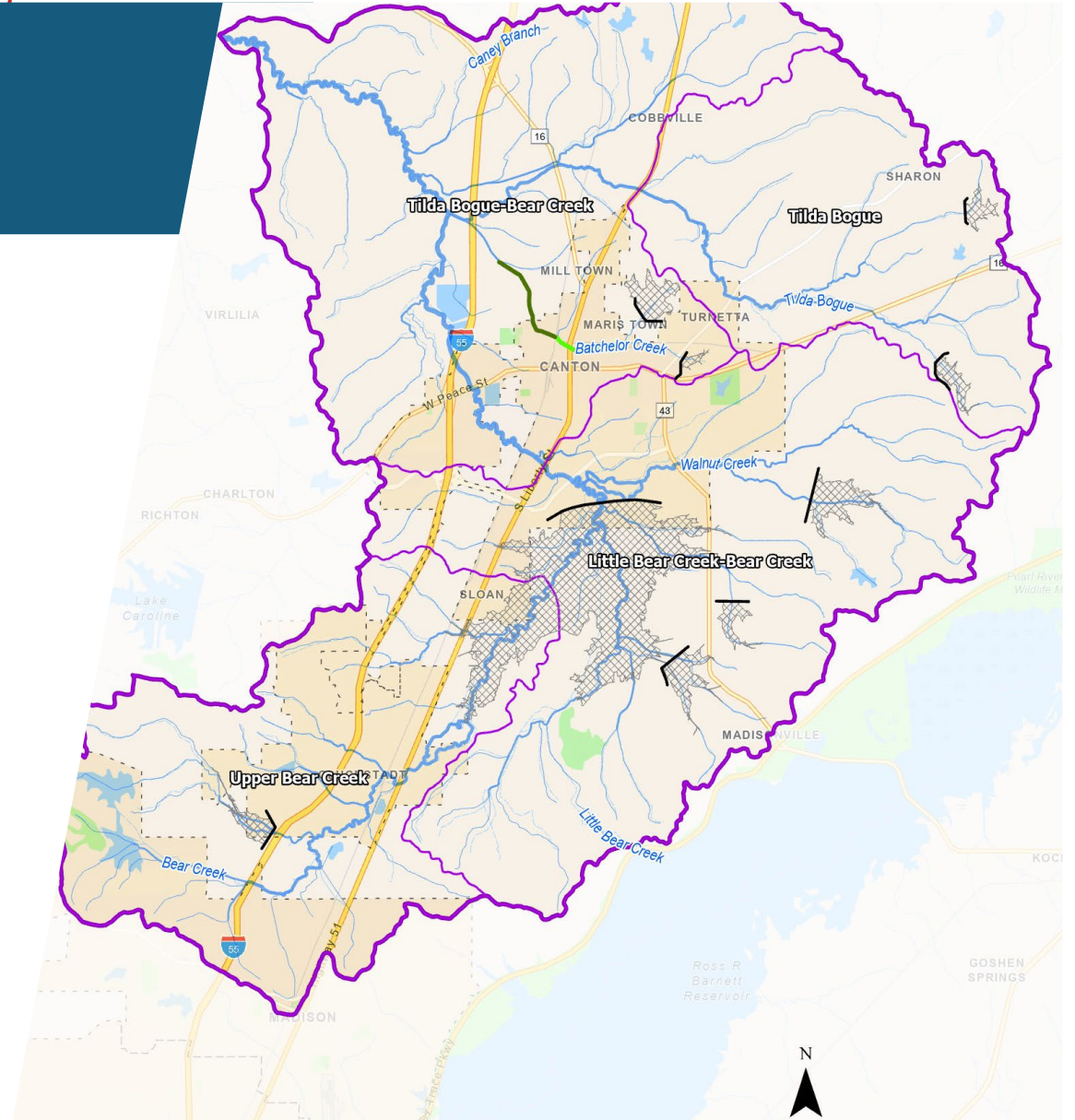
- Remove or reduce the flood water before it creates risk to properties
- Get the flood water out of risk areas faster
- Remove properties from areas of risk



Alternatives

Flood Storage (Dry Dams) throughout Watershed

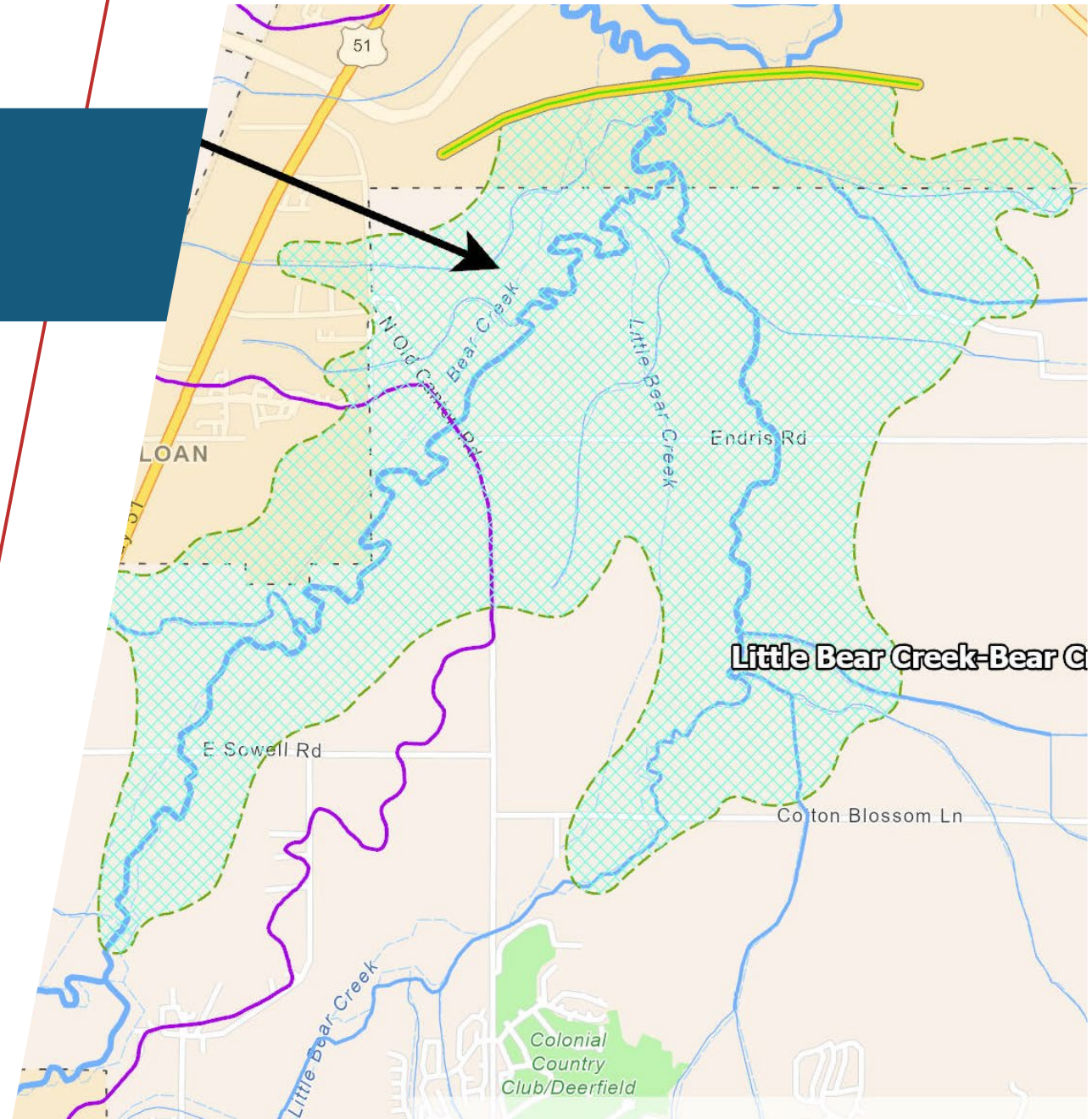
- 8 different locations
- Small dry dams (30-300 acres)
- Reduce peak flood flows
- Some permanent acquisition
- Some flood easements
- Does not provide significant reduction in critical areas



Alternatives

Flood Storage on Bear Creek

- Dry Dam structure across floodplain
- 4,200-acre flood pool
- Reduces flood depth in south Canton by 2-3 feet
- Permanent acquisition of substantial number of properties
- Significant detrimental impact to roads
- Significant impacts to floodplain habitat
- Exorbitant cost of implementation
- Significant real estate cost to Madison County



Alternatives

Channel Widening on Bear Creek, Batchelor Creek, & Hot Water Ditch

- Enlarge existing channels and line with rock
- Substantial enlargement necessary to achieve beneficial results
- Permanent acquisition of substantial number of properties
- Significant alteration to local neighborhoods
- Significant impacts to floodplain habitat
- Exorbitant cost of implementation



Natural Resources Conservation Service
U.S. DEPARTMENT OF AGRICULTURE



Alternatives

Flood Wall on Batchelor Creek

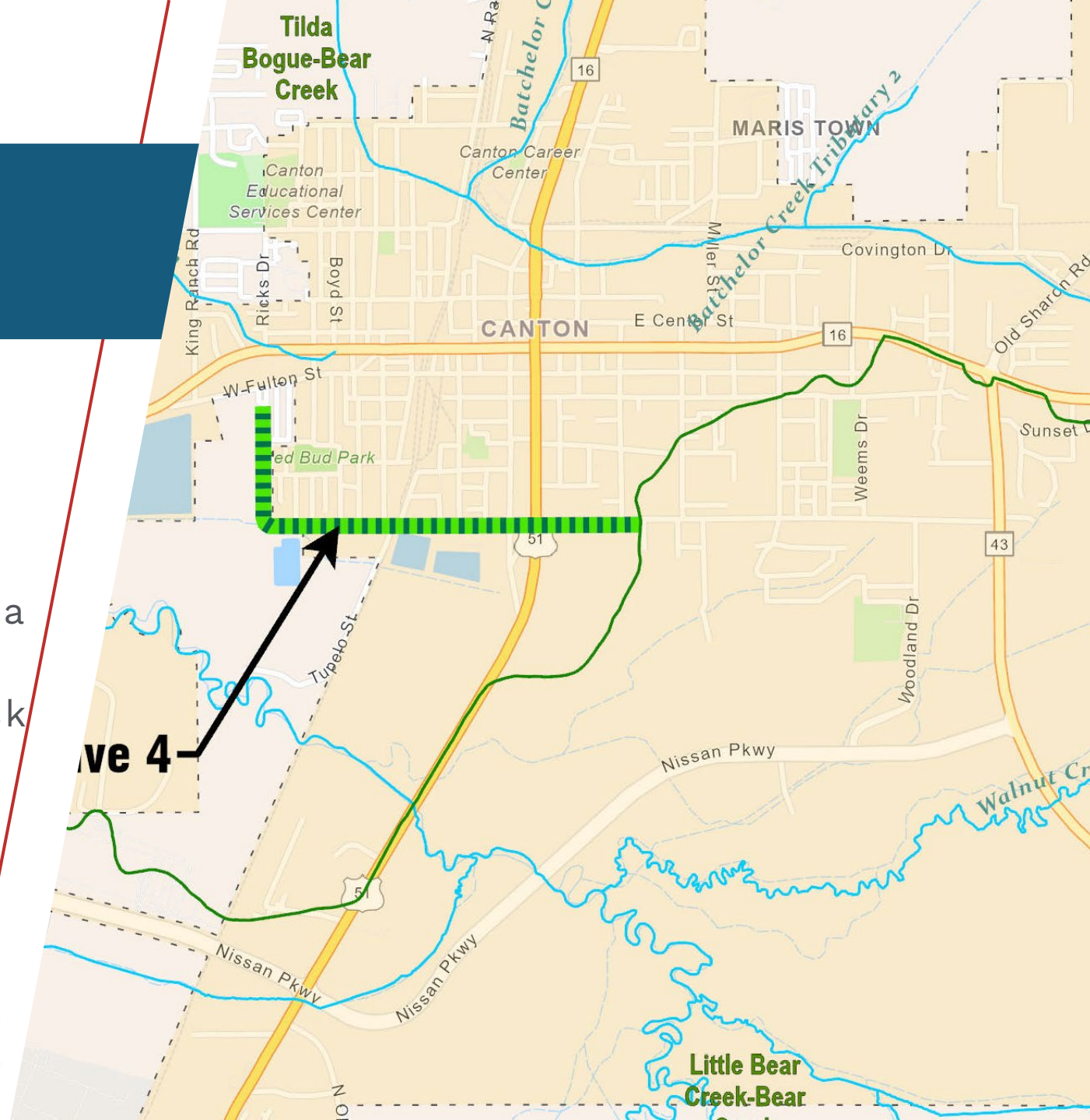
- Combination earthen berm and sheet pile wall along both sides of creek
- Low profile, 5-foot height (+/-)
- Reduces flood depth in critical areas
- Removes 150+ homes from flood risk
- Permanent acquisition affecting 30+ properties



Alternatives

Flood Levee in South Canton

- Earthen levee around area vulnerable to Bear Creek flooding
- Low profile, 5-foot height (+/-)
- Reduces flood depth in critical area up to 6 feet
- Removes 60+ homes from flood risk
- Permanent acquisition affecting 40+ properties
- Impacts 2 local roads

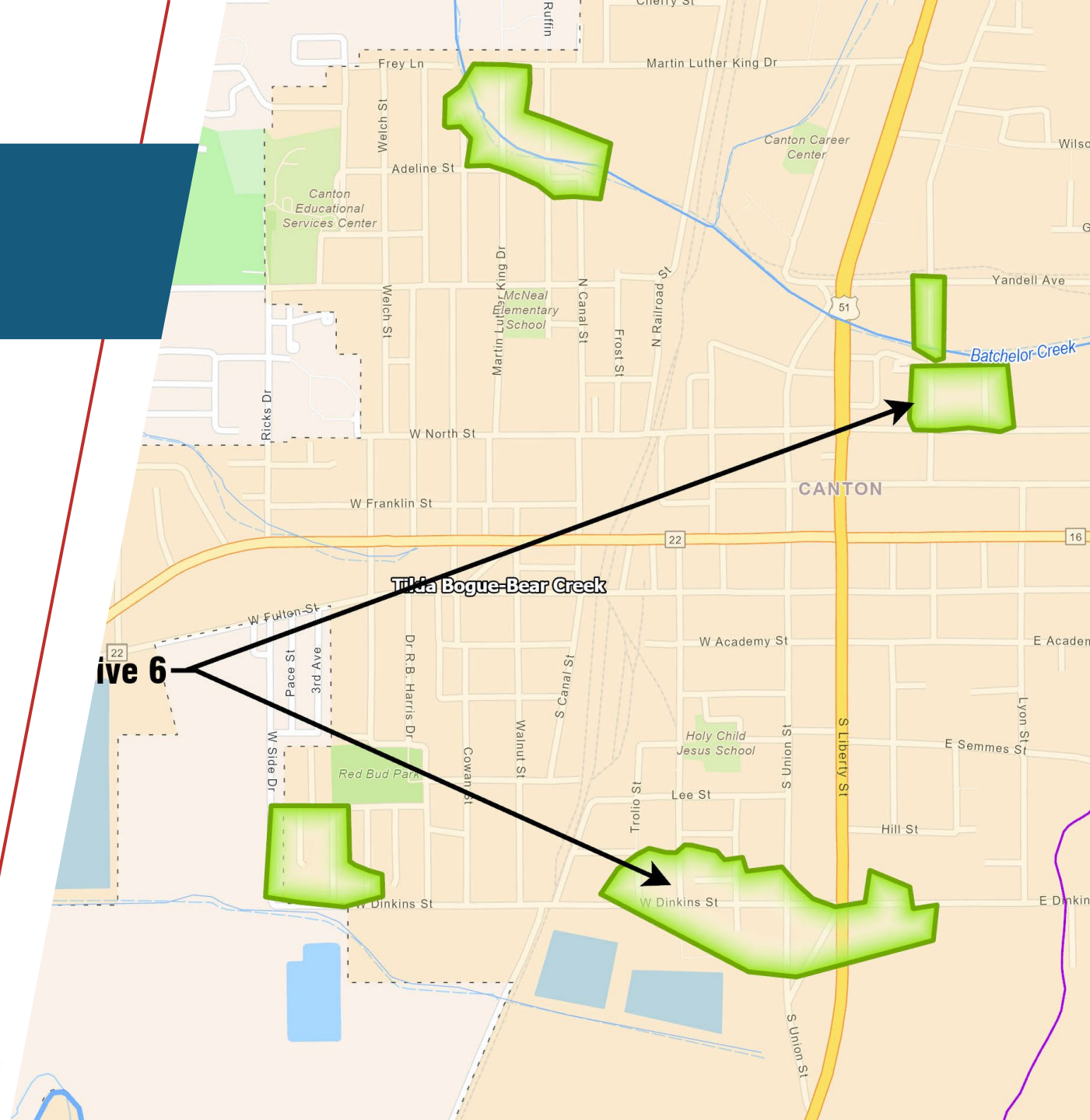


Alternatives

Nonstructural

Voluntary Floodplain Buyout

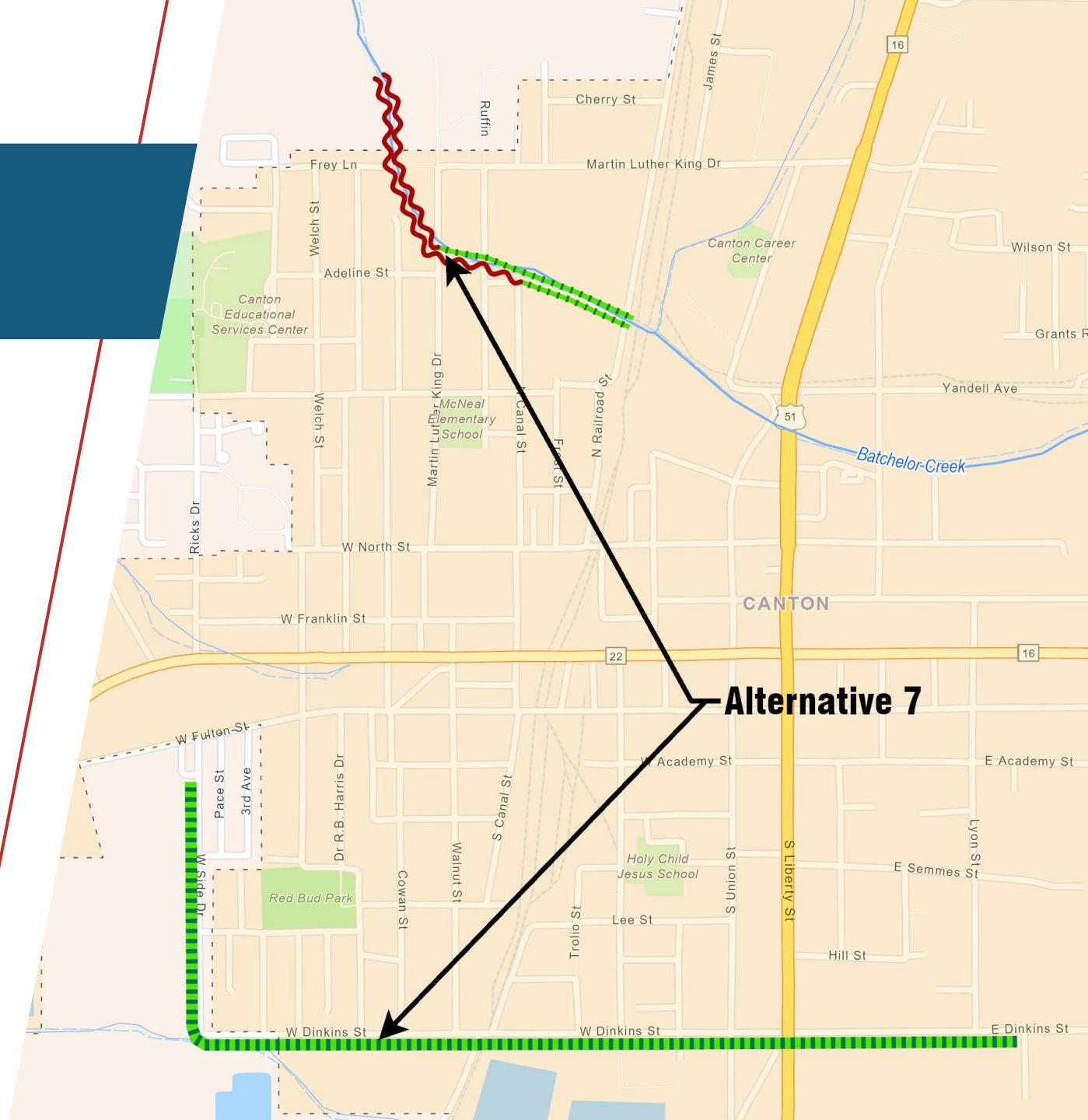
- Focused on areas most at risk of flooding
- Voluntary – application based
- Acquisition at FMV
- Relocation provision
- Potential to remove over 125+ homes from flood risk
- Property converted to permanent conservation easement
- Overall benefit uncertain, due to voluntary nature



Alternatives

Combination – Structural Measures on Batchelor & Bear Creeks

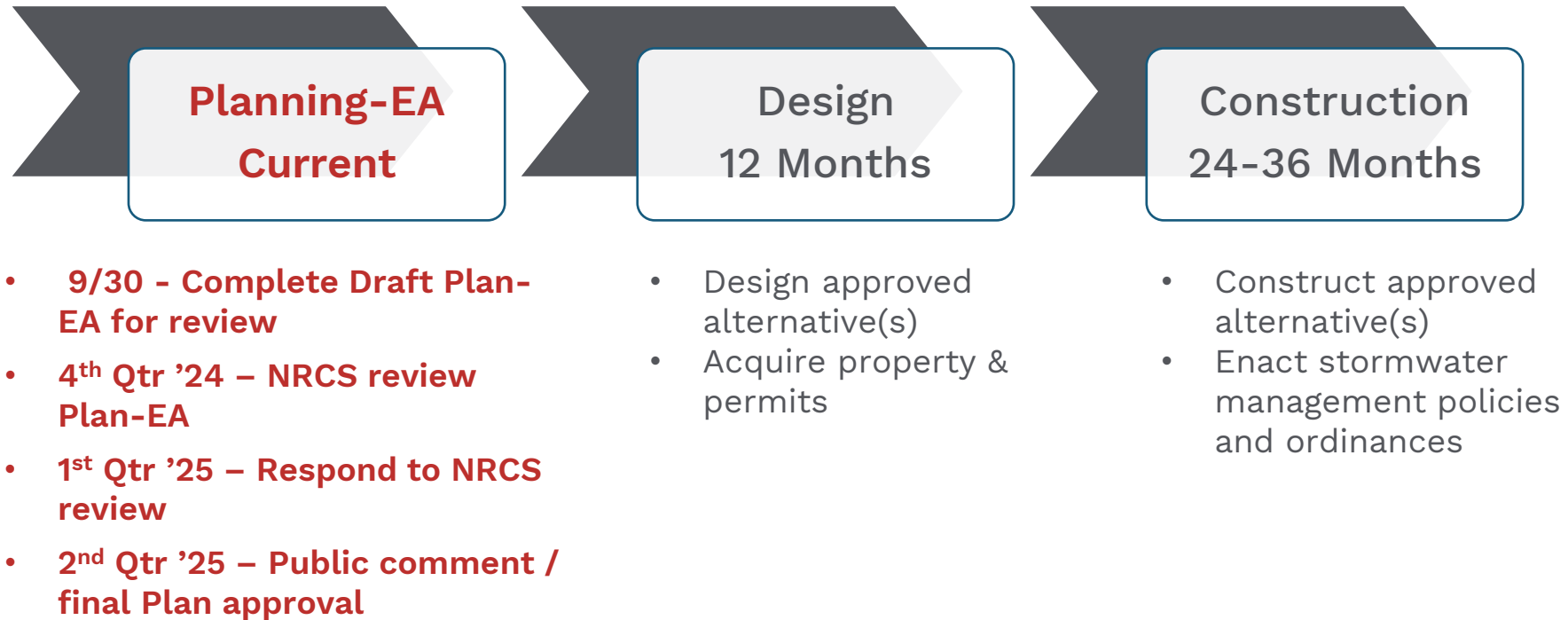
- Earthen levees & flood walls
- Low profile, 5-foot height (+/-)
- Reduces flood depth in critical areas between 2-6 feet
- Removes 225+ homes from flood risk
- Permanent acquisition affecting 100+ properties
- Impacts 2 local roads
- **Most benefits at least cost & impact**



Natural Resources Conservation Service
U.S. DEPARTMENT OF AGRICULTURE



Next Steps & Timeline



How to Submit Comments

Please submit comments by August 15, 2024



BearCreekInfo@waggonereng.com



**Waggoner Engineering
Attn: Bear Creek Watershed
143-A LeFleurs Square
Jackson, MS 39211**